



# SUPPORT FOR STEPS REGISTERED MODEL



## SUPPORT FOR STEPS

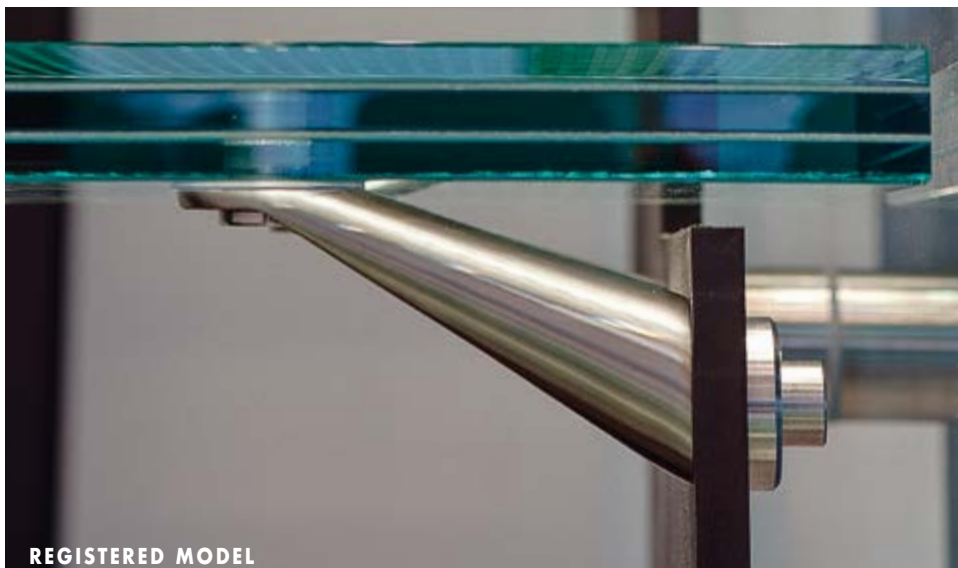
Material: AISI 304 stainless steel

Features: support for glass steps adjustable in all directions, with option to fit either on wall or glazed wall.

Suited for tempered laminated glass, supplied with steel bush, M10 x 25 mm grub screw and M10 x 50 mm screw

Option to supply grub screw in a different size on the customer's request.

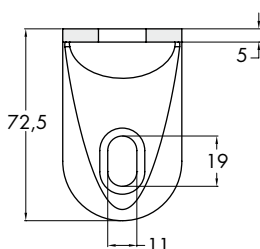
Finish: polished and brushed steel



REGISTERED MODEL



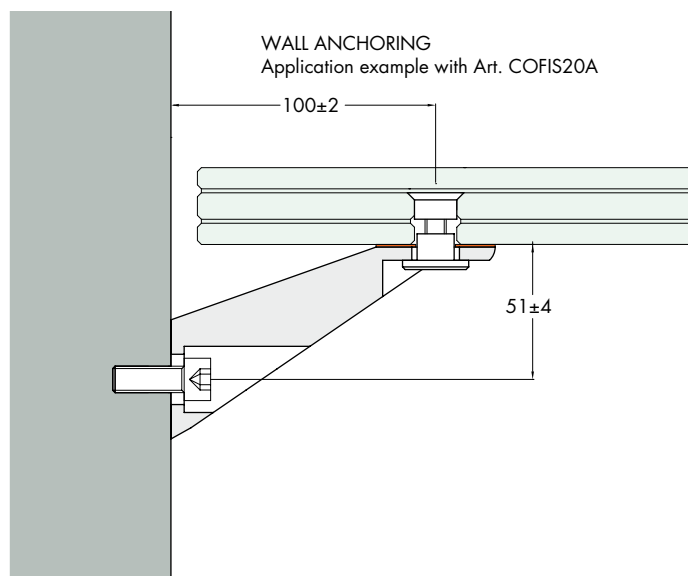
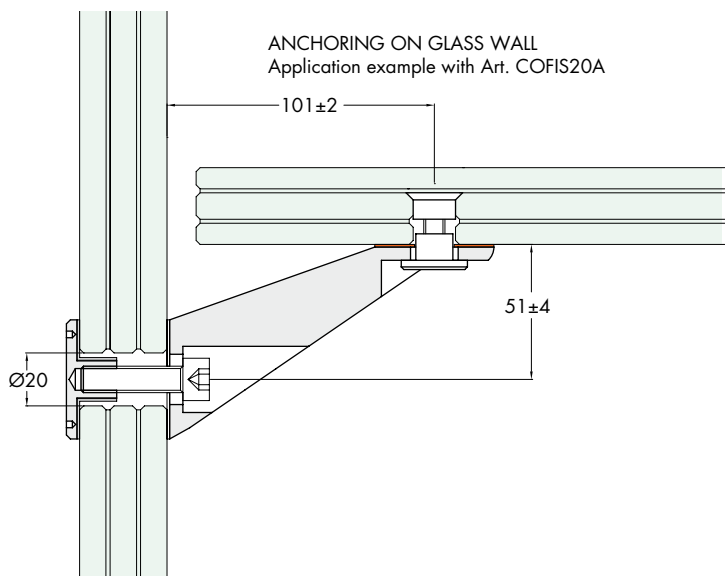
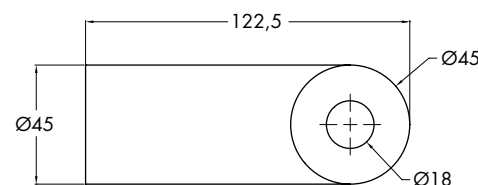
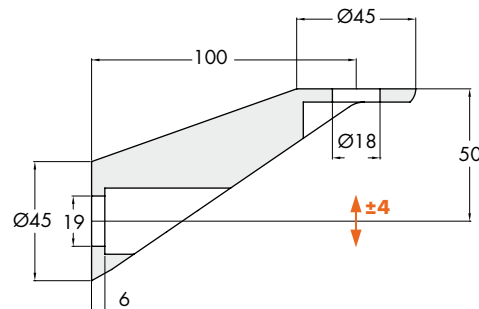
REGISTERED MODEL



standard supplied



Recommended tightening tool:  
**Art. UT250**



Art.  
**SUPGR01**

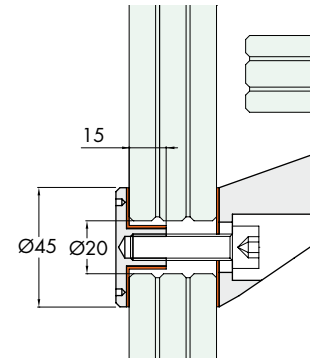
Dimensions  
H 72.5 mm L 122.5 mm

Q.ty  
1 Set



## FIXING STUD ON GLASS WALL

Material: AISI 304 stainless steel, white PVC  
 Features: fixing stud with M10 non-through threaded hole, supplied with gaskets and M10 x 35 mm cylindrical head screw  
 Finish: machined steel (CNC)  
 Recommended tightening tool: **Art. UT250**

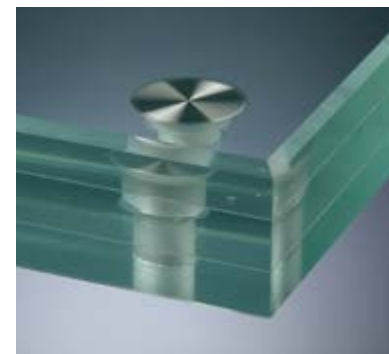
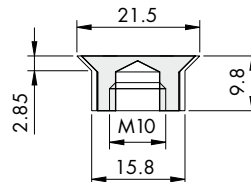


<b>Art.</b> <b>SUPGR03</b>	<b>Dimensions</b> Ø45 - neck 16.5 mm	<b>Glass hole</b> Ø20 mm	<b>Q.ty</b> 1 Pc
-------------------------------	---	-----------------------------	---------------------



## FIXING CONNECTOR 20

Material: AISI 304 stainless steel with aluminium gasket.  
 Hole: 16/17 mm 90° flaring  
 Finish: machined steel (CNC)

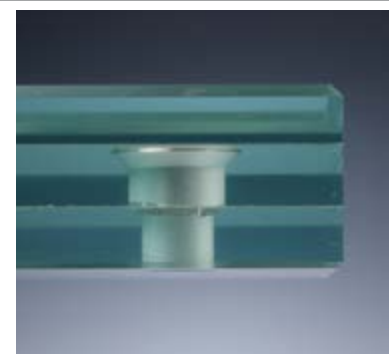
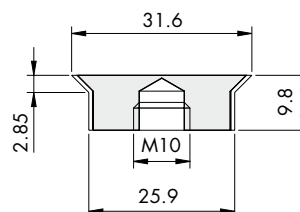


<b>Art.</b> <b>COFIS20A</b>	<b>Dimensions</b> Ø21.5 x H 9.8 x base Ø15.8 mm	<b>Q.ty</b> 1 Pc
--------------------------------	--	---------------------



## FIXING CONNECTOR 30

Material: AISI 304 stainless steel with aluminium gasket.  
 Hole: 26/27 mm 90° flaring  
 Finish: machined steel (CNC)



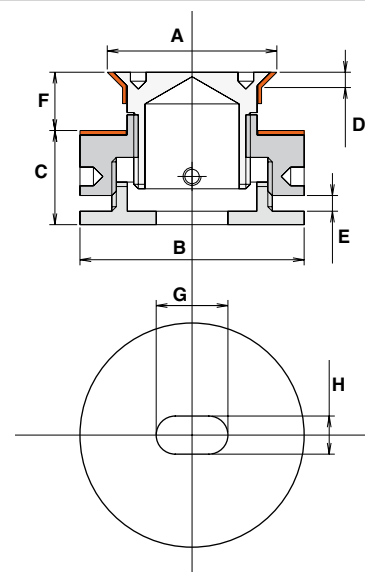
<b>Art.</b> <b>COFIS30A</b>	<b>Dimensions</b> Ø31.6 x H 9.8 x base Ø25.9 mm	<b>Q.ty</b> 1 Pc
--------------------------------	--	---------------------



## ADJUSTABLE FIXING STUD FOR GLASS STEPS

Material: AISI 304 steel  
 Features: adjustable stud for fixing glass panes. Stud fitting height can be adjusted to the structure by 3.5 mm.  
 Flared hole in plan view for better positioning adjustment.  
 Hole in glass: 32 countersunk, depth **D** = 3 mm  
 Glass thickness: 16/30 mm  
 Finish: machined steel (CNC)

Recommended tightening tool:  
**Art. UT250 / CHSETT32**



<b>Art.</b> <b>MDSCA38</b>	<b>Dimensions</b> <b>A</b> Ø38 <b>B</b> Ø50 mm	<b>Adjustment slot</b> <b>G</b> 16 <b>H</b> 8.5 mm	<b>Height</b> 30.5/48.5 mm	<b>Distance from ground</b> <b>C</b> 17.5/21 mm	<b>For glass panes</b> <b>F</b> 16/30 mm	<b>Adjustment</b> <b>E</b> 0/3.5 mm max	<b>Q.ty</b> 1 Pc
-------------------------------	---	---	-------------------------------	--	---	--	---------------------